



BROCHÛRE 2024

[www.water-jump.fr](http://www.water-jump.fr)

# OUR COMPANY



BOARD



FEASIBILITY  
STUDY



DESIGN



PRODUCTION



TRAINING

With a wealth of experience and success in operations since its first creation in 2013, the FRENZY group naturally founded FrenzyFactory to offer its expertise in the creation of water parks. Our passionate, multi-disciplinary team is ready to listen to your needs and make your FRENZY project a reality.



F A B R I C A T I O N   F R A N Ç A I S E





# CONTENTS

01

## **WATER JUMP IN POOL**

A park to be set up on a plot of land

02

## **FLOATING WATER JUMP**

A park to be set up on a stretch of water

03

## **A COMPREHENSIVE OFFERING**

Why choose Frenzy Factory?

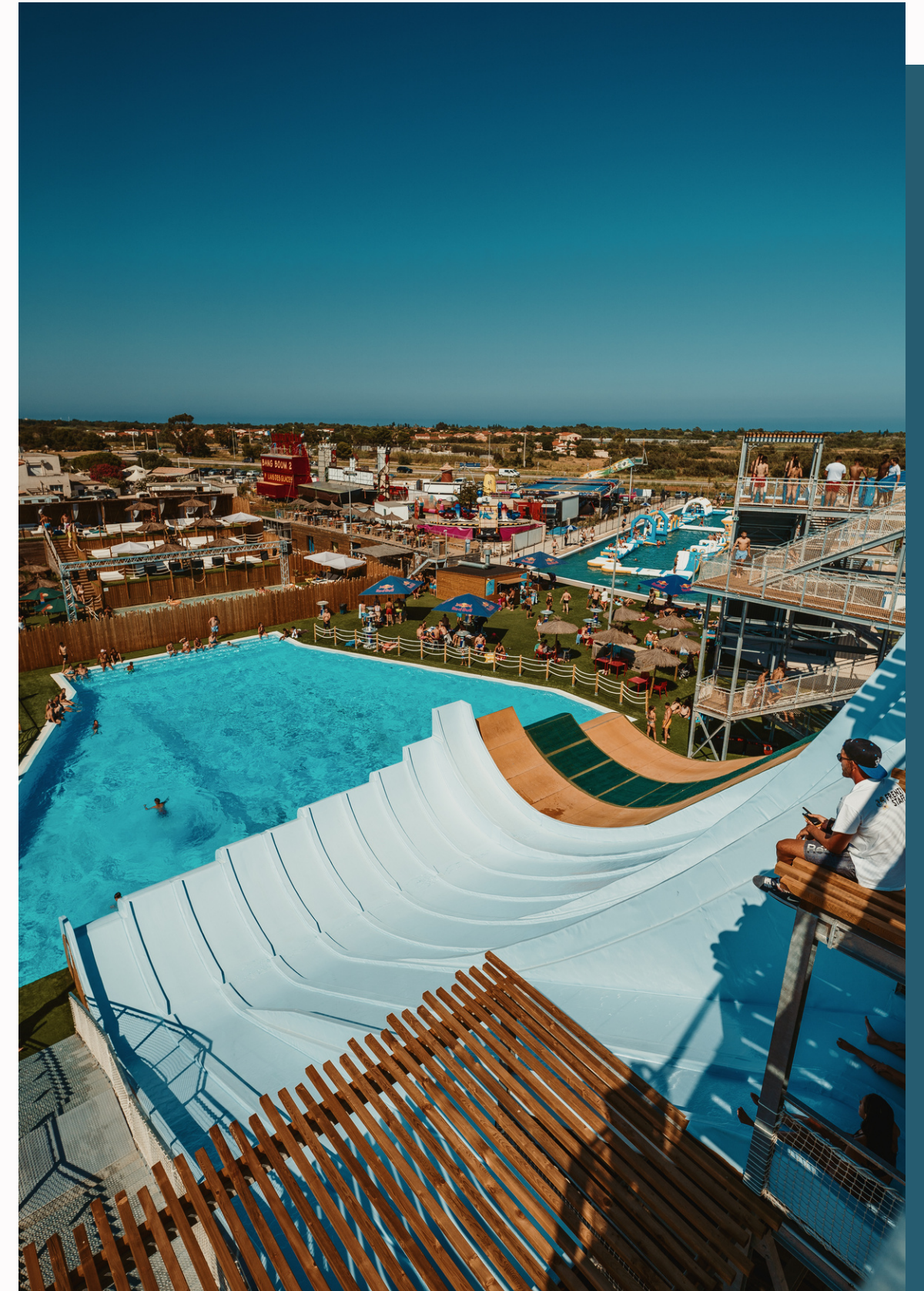
04

## **OUR PROJECTS**

From our beginnings to today

05

## **CONTACT**

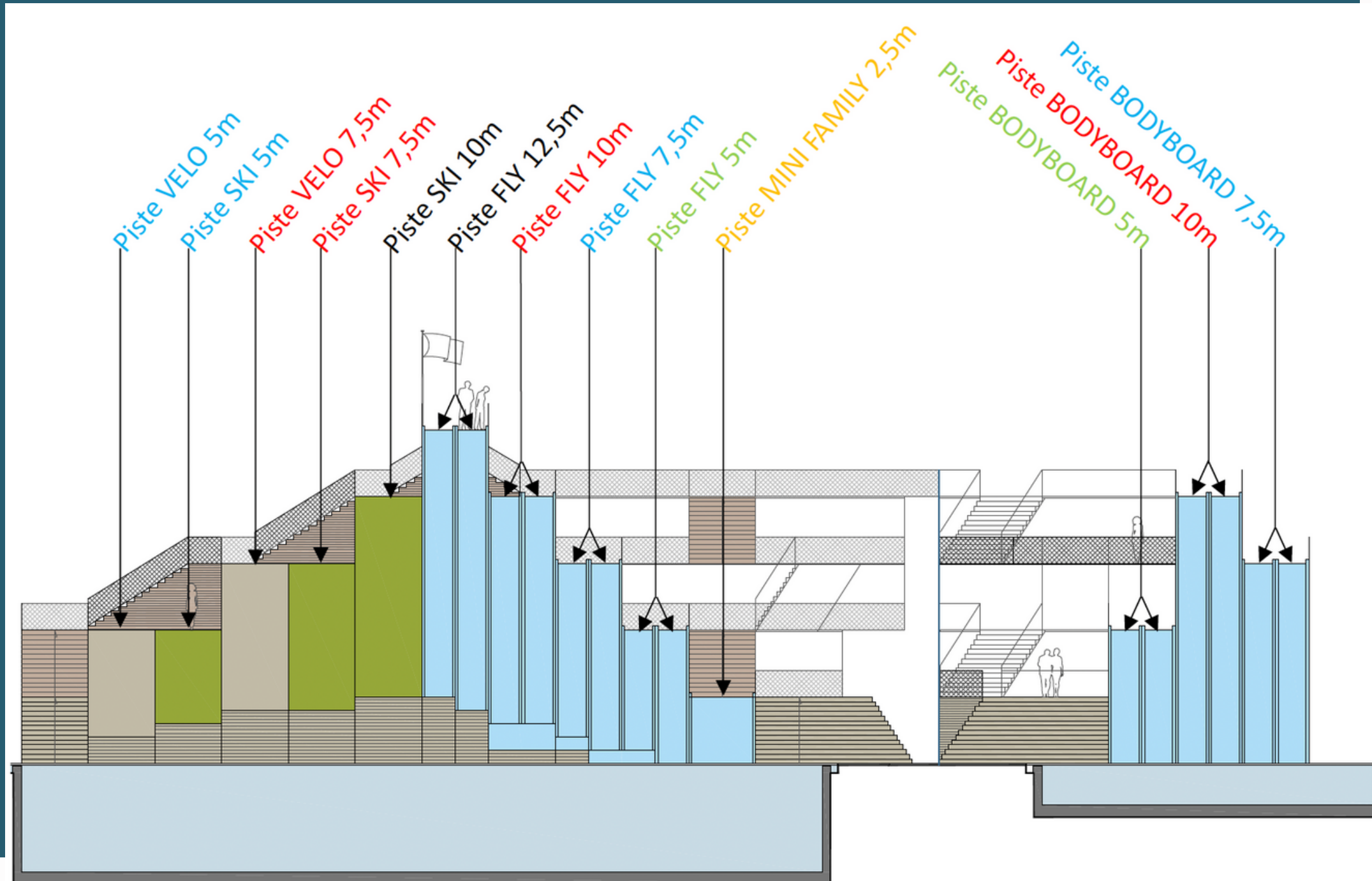




# WATER JUMP IN POOL

01

**Choose your ramps, their height and level of difficulty**



## LEVELS OF DIFFICULTY

Accessible from age 3, attraction for toddlers

Accessible from age 5, attraction for children and adult beginners

Accessible from age 5, confirmed level for children and adults

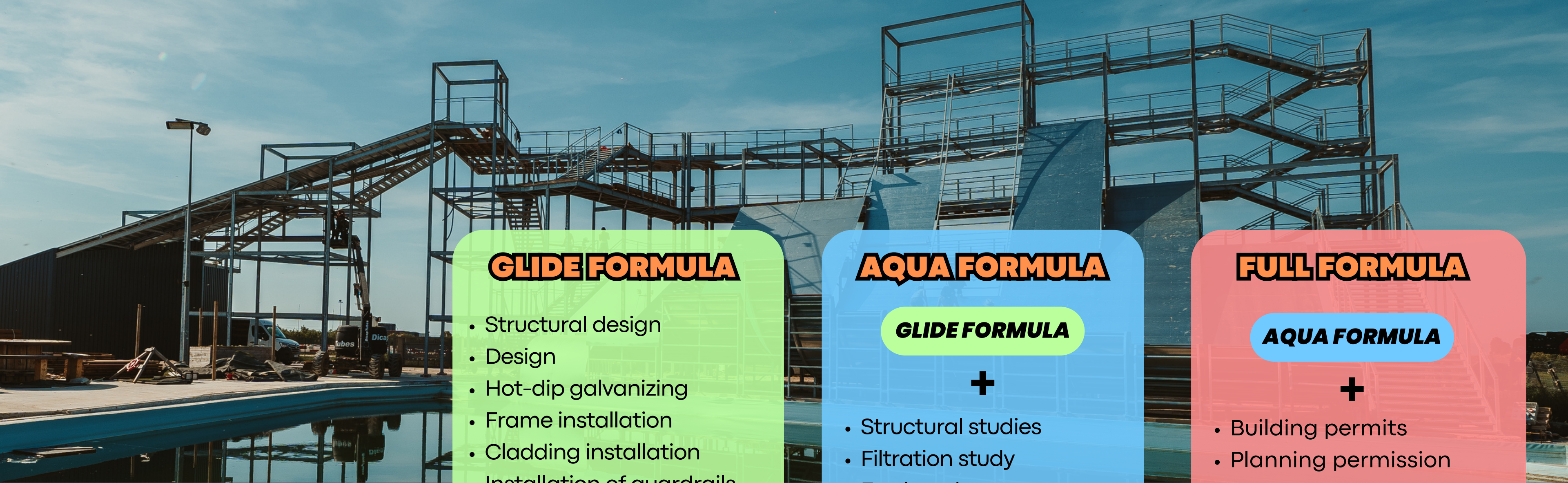
Accessible from age 7, expert level for children and adults who have mastered

Accessible from age 10, pro level for children and adults who excel

## YOUR TREMPLINS







# AND OUR MISSIONS!

## GLIDE FORMULA

- Structural design
- Design
- Hot-dip galvanizing
- Frame installation
- Cladding installation
- Installation of guardrails
- Helmets, vests, bicycles...
- Compliance
- Supply of POSS & operating procedures
- Provision of regulation signs
- Staff training
- After-sales service with 7/7 hotline

## AQUA FORMULA

### GLIDE FORMULA



- Structural studies
- Filtration study
- Earthworks
- Structural work
- Filtration & networks
- Pool liner installation
- Track connection
- Compliance

## FULL FORMULA

### AQUA FORMULA



- Building permits
- Planning permission
- Concession request
- Site organization
- Project management for the entire park, including sanitary facilities, snack bar, etc.
- Bringing the entire facility into compliance.





# WATER JUMPING IN A POOL

## *"You're at home"*



The No. 1 advantage of this concept is ownership. It gives you the freedom to choose your own opening days and times, and to play music of varying volume. It also offers the possibility of organizing events.



Our ponds are designed with the strictest respect for the environment. We care about the world we leave to our children. Our ponds consume very little water. Our discharges are dechlorinated to avoid polluting the water table.



The disadvantage of setting up a Water Jump in a pond is the incompressible administrative delays. You'll need to be patient with the various procedures involved (building permits, impact studies, etc.).



In winter, we've thought of everything so that you don't need to visit the site. Once the park is closed, you'll only need a few hours to winterize the structure. You'll need just a few days to put it back into service before the season starts.



# FLOATING WATER JUMP

Choose the model that's right for you

**WJF10/2-1**



**WJF10/2-2**



Choice of attractions and levels of difficulty :

- 1 track FAMILY\* SLIDE 6m
- 4 FLY 6m tracks
- 2 FLY lanes 6m
- 1 diving board 6m
- 2 FLY 8.5m lanes
- 1 diving board 8.5m



**FMI\*\***  
**50p/hours**

**À partir de 349000 € HT**

Choice of attractions and levels of difficulty :

- 1 FAMILY SLIDE 6m
- 1 FAMILY FLY track 6m
- 2 lanes BODYBOARD 6m
- 2 FLY lanes 6m
- 1 diving board 3.5m
- 2 FLY lanes 8.5m
- 1 diving board 6m



**FMI**  
**100p/hours**

**À partir de 439 000 € HT**



# FLOATING WATER JUMP

*Choose the model that's right for you*

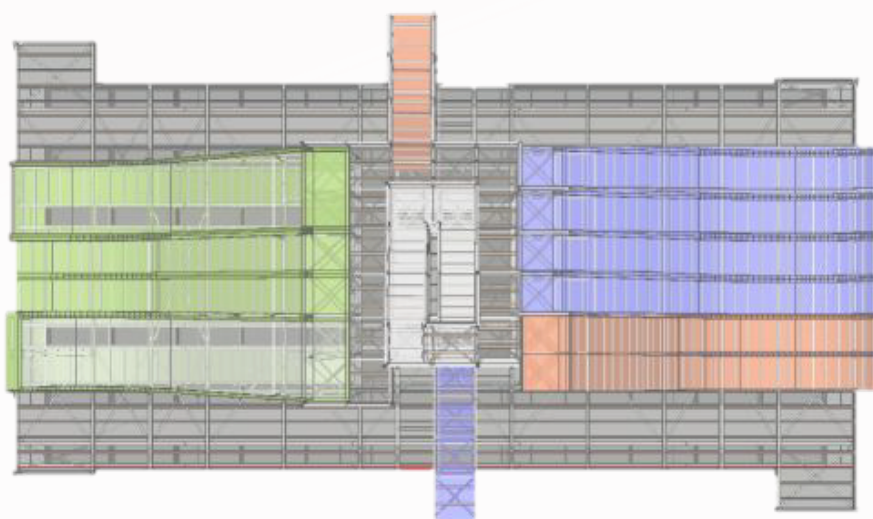
**WJF12/2-1**



## Example of profitability

Model WJF12/2-1 on 70j opening  
Hourly rate: 15€/adult; 8€/child  
Average basket: 12,5€ TTC/pers (10,40€ HT)  
Full park for 5 hours every day  
Either 120p x 5h x 70d = 42000clients/season  
Sales season 70d: 42000 x 10,4€HT = 436 800€HT

**WJF16/2-1**



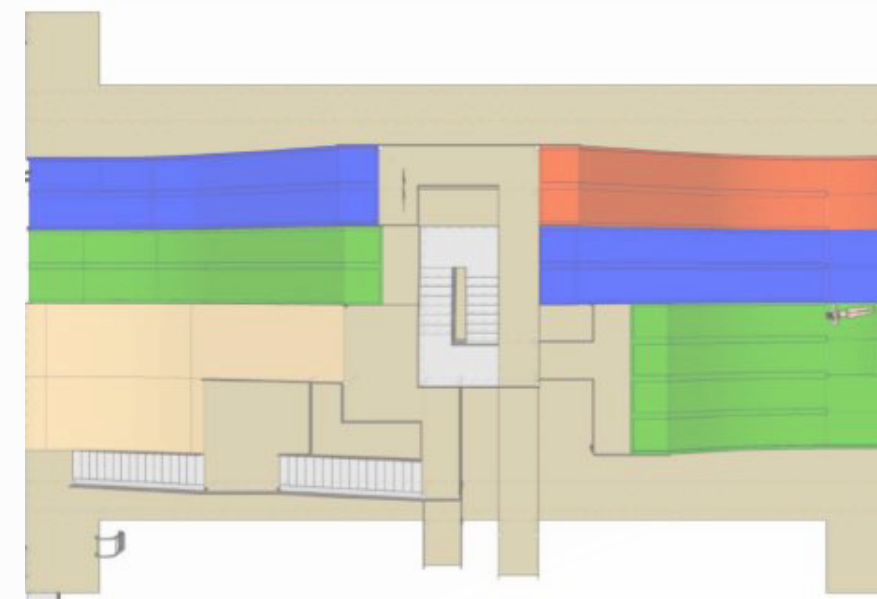
Choice of attractions and levels of difficulty :

- FAMILY SLIDE track 6m
- 1 FAMILY FLY track 6m
- 2 BODYBOARD lanes 6m
- 2 BODYBOARD lanes 8.5m
- 1 diving board 3.5m
- 2 FLY lanes 6m
- 2 FLY lanes 8.5m
- 1 diving board 6m



**FMI**  
120p/hours

**À partir de 489 000 € HT**



Choice of attractions and levels of difficulty :

- 4 FLY tracks 3.5m
- 1 VELO track 3.5m
- 2 BODYBOARD lanes 6m
- 2 FLY lanes 6m
- 2 BODYBOARD lanes 8.5m
- 1 BICYCLE track 6m
- 1 diving board 3.5m
- 2 FLY lanes 8.5m
- 1 diving board 6m



**FMI**  
150p/hours

**À partir de 649 000 € HT**



# AND OUR MISSIONS!

## FLOATING FORMULA

- Design
- Structural design
- Naval design
- Sailing title
- Frame construction
- Hot-dip galvanizing
- Fitting the framework
- Laying the floors
- Installation of guardrails
- Laying cladding
- Compliance
- Stability experience
- Supply of POSS & operating processes
- Supply of regulation signs
- Training of your staff
- After-sales service with 7/7 hotline

## ANCHORING FORMULA

### FLOATING FORMULA



- Mooring study
- Supply of pontoons
- Pontoon installation
- Mooring supply
- Installation of
- pontoons
- Installation of the park on the water surface

## BERGE FORMULA

### ANCHORING FORMULA



- Réalisation d'un permis d'aménager la berge
- Installation billetterie
- Installation sanitaires
- Installation snack/bar
- Installation électrique
- Création quai ponton
- Mise en place réseaux eau/eaux usées
- Mise en conformité



# THE FLOATING WATER JUMP

## *"Easy To Install"*



This model can be completely dismantled. This means it can be set up on any type of water body: lake, beach, pond... All you need to do is obtain the agreement in principle from the local authority to operate it.



No work on the riverbank. The park blends in perfectly with its surroundings. Out of season, it can be dismantled or simply moved to free up visual space for other activities (fishing, canoeing, etc.).



The structure is considered as a boat. This drastically simplifies administrative delays and constraints (no building permit, no water law dossier, etc.).



Thanks to its buoyancy, the structure adapts naturally to variations in water level. This reduces the risk of exceptional flooding and gives you peace of mind during winter storms.



# A COMPLETE OFFERING

03



## TRANQUILLITY

We provide you with the SOP, the operating process and the park rules signs. We train your staff.



## A PARK TO MATCH YOUR IMAGE

Vous êtes intégré au processus de création dès le départ. Nos équipes sont à votre écoute pour réaliser un parc selon vos envies.



## SAFETY

Everything is provided for the operation: helmets, vests and accessories for the tracks requested (bike, skateboard, ski, snowboard, bodyboard...).

# WHY CHOOSE FRENZY FACTORY

## KNOW-HOW

- ✓ Our team is trained and multidisciplinary
- ✓ Our experience since 2013

## INNOVATION

- ✓ We are constantly researching technologies and materials to offer environmentally-friendly, innovative and sustainable solutions.
- ✓ We are pioneers in :
  - Water Jump in artificial pools (2013)
  - Water Jump in heated pools (2016)
  - progressive start boxes and springboards (2017)
  - Floating Water Jump (2018)
  - Frenzy Wave (2019): a wave dedicated to wakeboards

## NOTORIETY

We are recognized for our rigorous approach to :

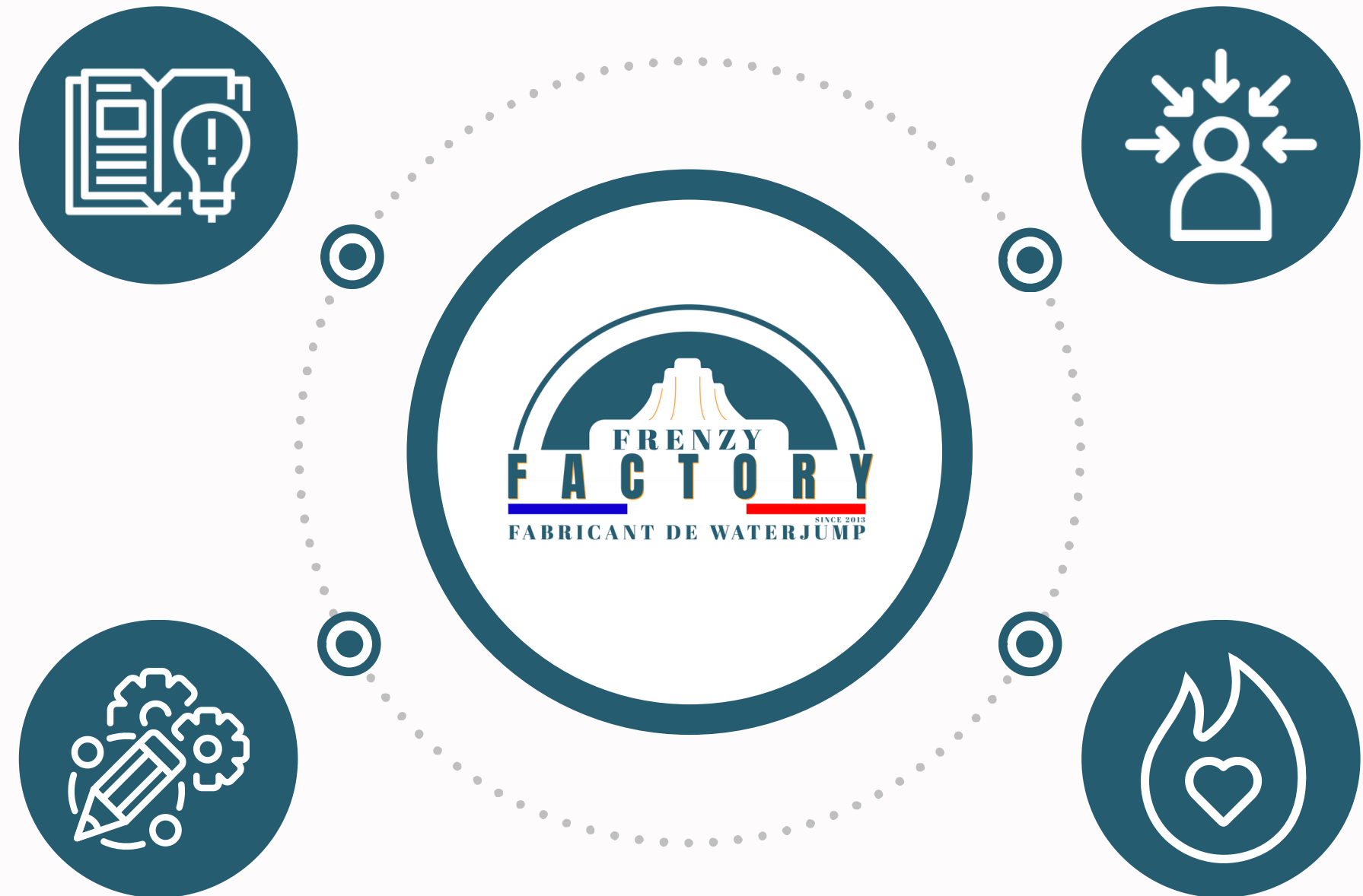
- ✓ The safety of our customers
- ✓ Respect for budgets and deadlines
- ✓ Anticipating changes in the business
- ✓ Advice and follow-up

## PASSION

Frenzy Factory is above all a state of mind!

Our team is passionate about extreme sports, and regularly takes part in these kinds of activities.

We're capable of responding to your most unusual requests, for your greatest pleasure ... and ours!





# AFTER MANUFACTURING, THERE'S OPERATIONS

Following numerous requests from our customers for assistance with day-to-day fleet management, we offer 2 solutions:

## YOU GLIDE ALONG ALONE

We offer this "turnkey" service, in which we are only the designer and manufacturer. Once the park has been built and your staff trained, you operate your park on your own, in your own way, with no constraints and no franchise system.

- You are free in your project.
- You have no commitments and keep 100% of the turnover for yourself.

You can manage your business as you see fit (opening times and periods, communications/events, recruitment, accounting...).

- Banks prefer to finance experienced operators.
- Stress due to day-to-day management and technical issues.



## FRENZY GLIDES WITH YOU

Building on its experience since 2013 in Torreilles, the Frenzy name has become an icon in the aquatic sector.

Frenzy is the most followed water park in France on the networks, with 300k followers on Facebook, 110k on Instagram and 450k on Tik Tok.

- Implementation of a discount on the cost of the work.
  - Direct relevance of your communication -> lower costs
  - and performance.
  - Frenzy Best Tricks at home, in partnership with Red Bull
  - Filling of the park from the 1st season-> more revenue
- Provision of a filtration technician.

- A financial contribution will be made to Frenzy.
  - Setting up a charter
- Frenzy must approve each change on site

# OUR PROJECTS

04

Our 1st park has become the European benchmark for Water Jump. Created in 2013, this park is our innovation laboratory: heated pools in 2016, extreme descents and evolving springboards in 2017, the wave in 2019. In 2022, the park underwent its biggest transformation, extending over 2.5 hectares, offering a multitude of water activities for all ages. In 2024, the park completes its expansion with 9 slides and a 200m-long Riviera.

## FRENZY WATERPARK TORREILLES (66-FRANCE)

Delivered in 2013

Land area : 4 000 m<sup>2</sup>

FMI : 350p/h

Attractions and levels of difficulty :

### WATER JUMP :

- 2 runs FAMILY FLY 5m
- 2 FLY 7.5m tracks
- 2 FLY 10m tracks
- 4 FLY track 12,5m
- 1 track BIKE 5m
- 1 slope SKI 7,5m
- 1 run BIGAIR BIKE 10m

### WATERGAME :

Inflatable playground on swimming pool (unique in France)

### WATERSLIDE :

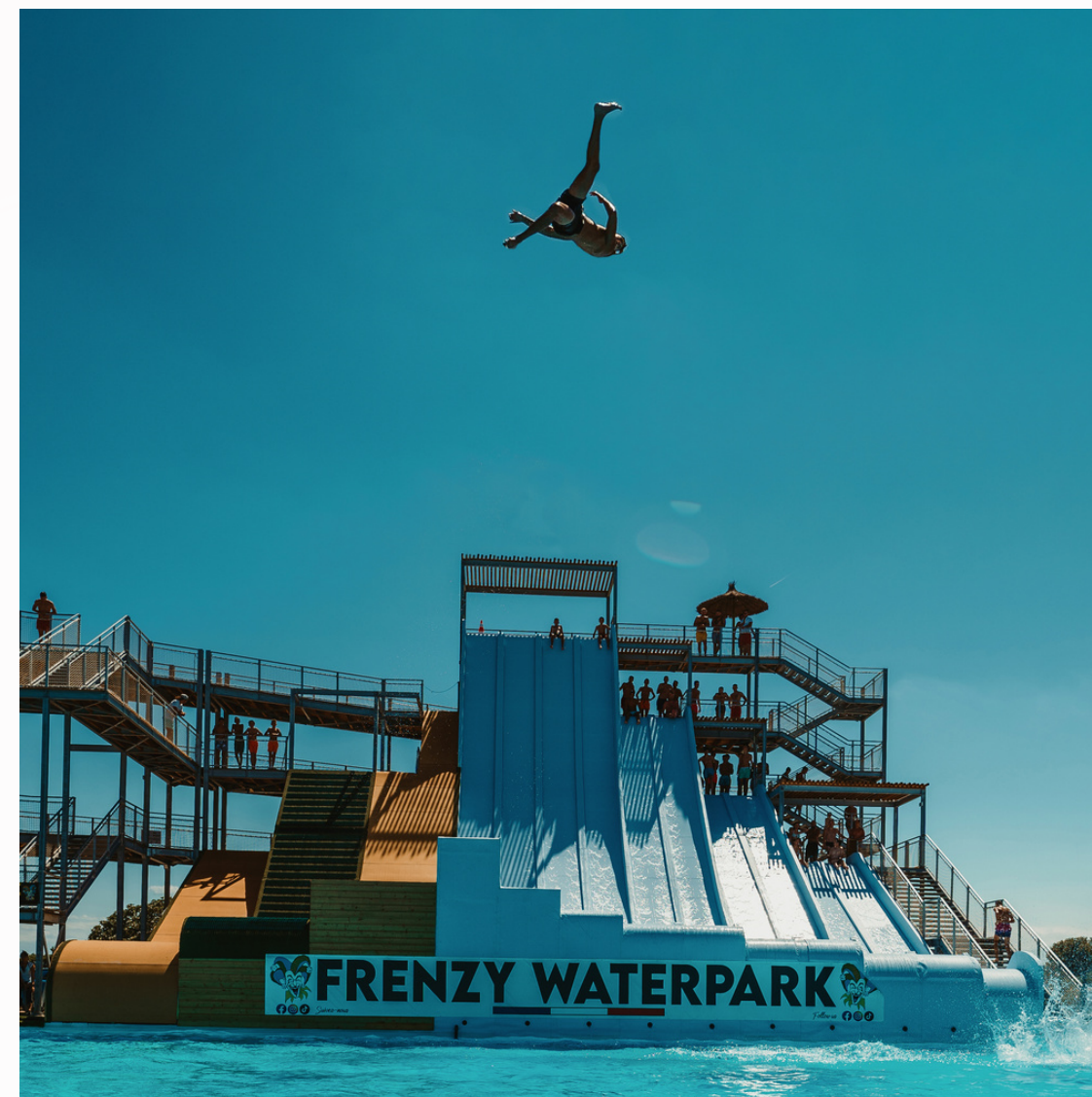
- 2 tracks BODYBOARD 5m
- 2 tracks BODYBOARD 7,5m
- 2 BODYBOARD lanes 10m

### SLIDES :

- 9 Slides
- 1 River a 200m long

### FOLIES :

Pools heated to 30°C





To revitalize its water sports base, the AQUAVIVA park decided to place its trust in us in 2015 so that we could equip it with 2 lanes that enabled it to double its Sales in the first year.

## AQUAVIVA CARCASSONNE (11-FRANCE)

Livré en 2015

Land area : 1 000 m2

FMI : 30p/h

Attractions and levels of difficulty :

- 1 FAMILY SLIDE track 6m ●
- 1 FLY runway 7.5m ●





In 2016 we decided to partner with FISE Montpellier to create an ephemeral Water Jump park. Jumps were landed on our BigAirBag cushion. Duration: 3 days.

## FISE MONTPELLIER (34-FRANCE)

Ephemeral park erected in 2016

Floor area : 500 m2

Attractions and levels of difficulty :

- 1 FLY track 7.5m
- 2 track BIKE 7,5m





This park wanted to expand its Water Jump offering. The situation was tricky, as it would require a modification to the shoreline and a building permit. So we proposed an A-structure: a Floating Water Jump with a navigation permit.

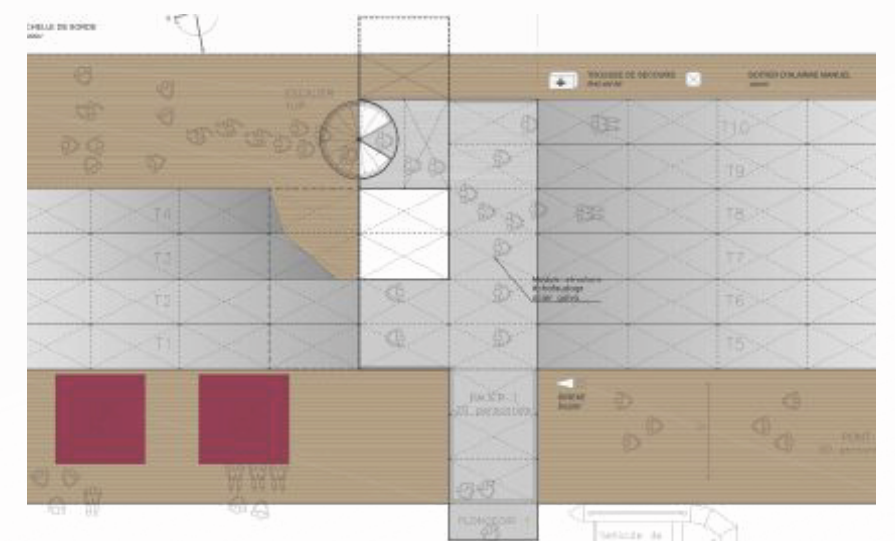
**Model WJF10/2-1**

## AQUAVIVA CARCASSONNE (11-FRANCE)

Delivered in 2018   Surface on water: 1 500 m<sup>2</sup>   FMI : 50p/h   Cost of work : 299 000 €HT

Attractions and levels of difficulty :

- 1 FAMILY SLIDE 5m (5 people simultaneously)
- 4 FLY lanes 6m
- 2 FLY lanes 6m
- 1 diving board 6m
- 2 FLY lanes 8.5m
- 1 diving board 8.5m





To complete the offer of the water park it had just acquired, this operator asked us to build a WaterJump with 6 lanes in 2019.

## AQUAJET NARBONNE (11-FRANCE)

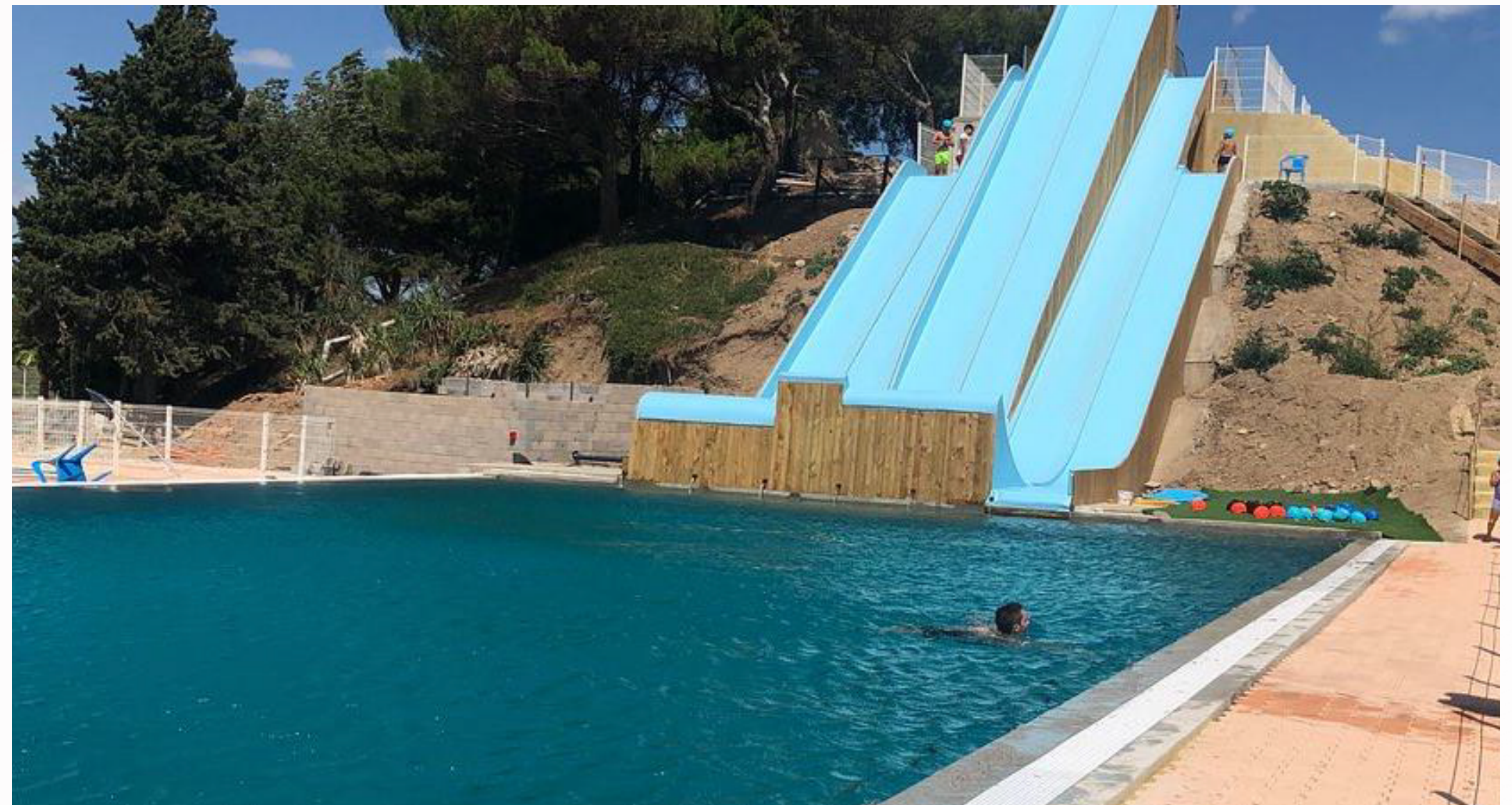
Delivered in 2019

Land area : 1 500 m<sup>2</sup>

FMI : 150p/h

Attractions and levels of difficulty :

- 1 BODYBOARD lanes 5m
- 1 FLY lane 5m
- 2 FLY lanes 7,5m
- 2 FLY lanes 10m





The Vienne-Condrieu conurbation issued a call for tenders for the design and construction of a Water Jump for their Condrieu water sports center. It seemed obvious to us to propose a floating model, as it doesn't require any modifications to the banks, and avoids the need for a building permit. Floating water jumps also offer the option of 2 diving boards.

**Modèle WJF10/2-2.**

## WAM PARK CONDRIEU (38-FRANCE)

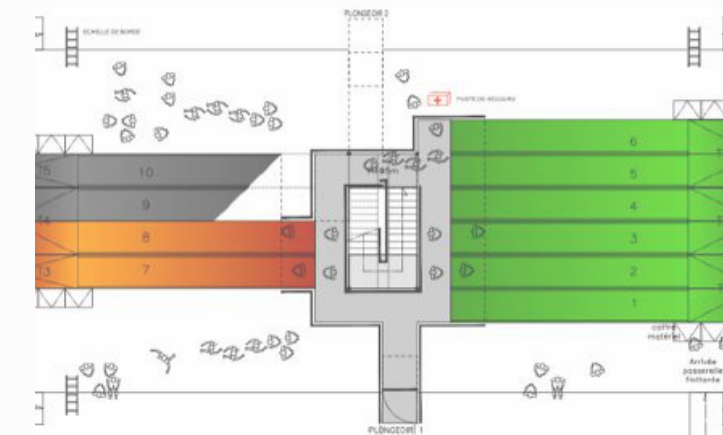
Delivered in 2018

Surface on water: 1 500 m<sup>2</sup>

FMI : 100p/h

Attractions and levels of difficulty :

- 1 FAMILY FLY runway 6m (5 people simultaneously) ●
- 1 FAMILY SLIDE 6m ●
- 2 BODYBOARD lanes 6m ●
- 2 FLY lanes 6m ●
- 1 diving board 3.5m ●
- 2 FLY lanes 8.5m ●
- 1 diving board 6m ●





To complement its existing WaterGames offering, AQUAFLY opted for a WJF10/2-2 model identical to the one in Condrieu. The park was manufactured, assembled and ready to open in just 3 months.

## AQUAFLY SAULXURES (88-FRANCE)

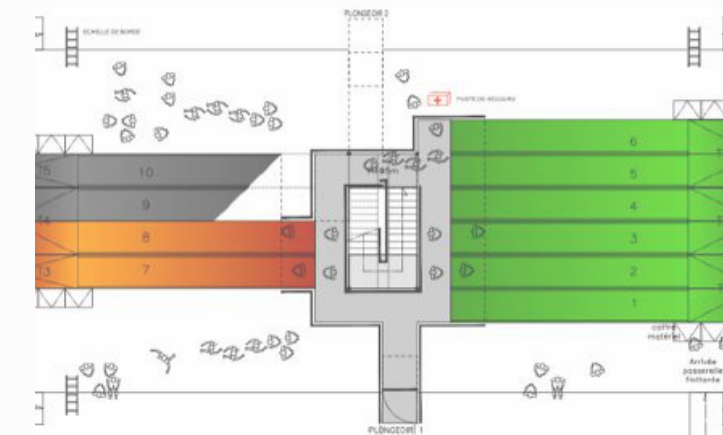
Delivered in 2021

Land area : 1 500 m<sup>2</sup>

FMI : 100p/h

Attractions and levels of difficulty :

- 1 FAMILY FLY runway 6m (5 people simultaneously)
- 1 FAMILY SLIDE 6m
- 2 BODYBOARD lanes 6m
- 2 FLY lanes 6m
- 1 diving board 3.5m
- 2 FLY lanes 8.5m
- 1 diving board 6m





C'est en pratiquant les rampes du Frenzy Palace en 2017 à Torreilles que Brandon a eu l'idée d'ouvrir son propre Water Jump avec son père dans le 74. Il aura fallu 3 longues années pour trouver la parcelle et obtenir les Permis de Construire et Permis d'Aménager. Sur la saison 2021 leur parc WATER CIRCUS a le titre du plus grand parc de Water Jump en Europe !

## WATERCIRCUS ÉTREMBIÈRES (74-FRANCE)

Delivered in 2021

Land area : 7 500 m<sup>2</sup>

FMI : 350p/h

Attractions and levels of difficulty :

- 1 FAMILY track 2.5m (5p simultaneous)
- 2 FLY tracks 5m
- 2 BODYBOARD lanes 5m
- 2 FLY tracks 7.5m
- 2 BODYBOARD lanes 7.5m
- 1 track BIKE 5m
- 1 track SKI 5m
- 2 runs FLY 10m
- 2 tracks BODYBOARD 10m
- 1 track BIKE 7.5m
- 1 SKI track 7.5m
- 2 FLY tracks 12.5m
- 1 track SKI 10m





To complete its existing WaterGames offering, WAMPARK has opted for a brand new model of Floating Water Jump: the WJF12/2-1, with 2 additional lanes to the **WJF10/2-2**. The park was manufactured, assembled and ready to open in just 3 months.

## WAM PARK FONTAINEBLEAU (77-FRANCE)

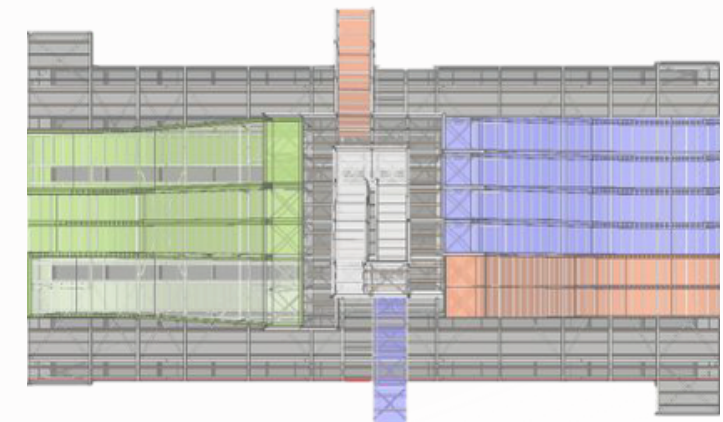
Delivered in 2018

Surface on water: 1 500 m<sup>2</sup>

FMI : 100p/h

Attractions and levels of difficulty :

- 1 FAMILY FLY runway 6m (5 people simultaneously)
- 1 FAMILY SLIDE 6m
- 2 BODYBOARD lanes 6m
- 2 FLY lanes 6m
- 2 BODYBOARD lanes 8.5m
- 1 diving board 3.5m
- 2 FLY lanes 8.5m
- 1 diving board 6m





To complement its existing WaterGames offering, WAMPARK opted for the Water Jump Floating model: the WJF12/2-1. Manufactured, assembled, and ready to open in just 3 months.

## WAM PARK TOULOUSE (31-FRANCE)

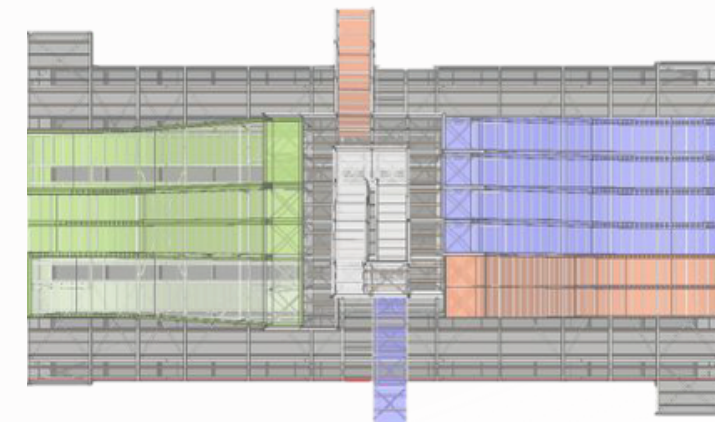
Delivered in 2023

Surface on water: 1 500 m<sup>2</sup>

FMI : 100p/h

Attractions and levels of difficulty :

- 1 FAMILY FLY runway 6m (5 people simultaneously)
- 1 FAMILY SLIDE 6m
- 2 BODYBOARD lanes 6m
- 2 FLY lanes 6m
- 2 BODYBOARD lanes 8.5m
- 1 diving board 3.5m
- 2 FLY lanes 8.5m
- 1 diving board 6m





To complement its existing WaterGames offering, WAMPARK opted for the Water Jump Floating model: the WJF12/2-1. Manufactured, assembled, and ready to open in just 3 months.

## WAM PARK

### ORANGE - PIOLENC (84-FRANCE)

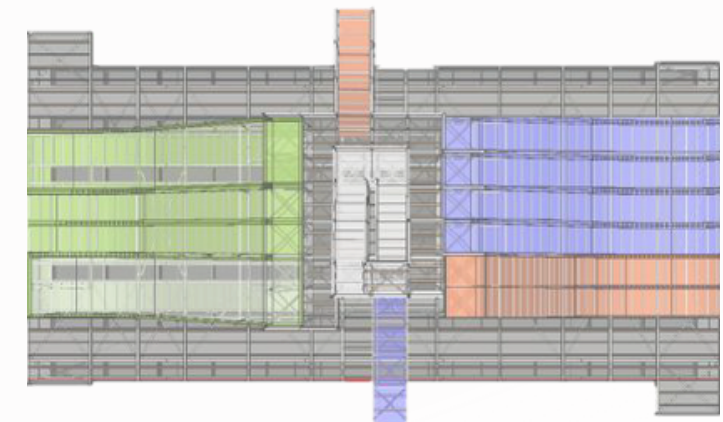
Delivered in 2024

Surface on water: 1 500 m<sup>2</sup>

FMI : 100p/h

#### Attractions and levels of difficulty :

- 1 FAMILY FLY runway 6m (5 people simultaneously)
- 1 FAMILY SLIDE 6m
- 2 BODYBOARD lanes 6m
- 2 FLY lanes 6m
- 2 BODYBOARD lanes 8.5m
- 1 diving board 3.5m
- 2 FLY lanes 8.5m
- 1 diving board 6m





**THEN, READY TO TAKE  
THE PLUNGE?**

# CONTACT



factory@water-jump.fr



www.frenzywaterpark.fr



169 lieu dit Les Rotes, 66440 TORREILLES



**+**

**3 3**

**6 3 8**

**2 0 8**

**7 7 6**

